

ICB1 Antibody (C-term)
Affinity Purified Rabbit Polyclonal Antibody (Pab)
Catalog # AP9910b**Specification**

ICB1 Antibody (C-term) - Product Information

Application	FC, WB,E
Primary Accession	Q5TEJ8
Reactivity	Human
Host	Rabbit
Clonality	Polyclonal
Isotype	Rabbit IgG
Antigen Region	613-641

ICB1 Antibody (C-term) - Additional Information**Gene ID** 9473**Other Names**

Protein THEMIS2, Induced by contact to basement membrane 1 protein, Protein ICB-1, Thymocyte-expressed molecule involved in selection protein 2, THEMIS2, C1orf38, ICB1

Target/Specificity

This ICB1 antibody is generated from rabbits immunized with a KLH conjugated synthetic peptide between 613-641 amino acids from the C-terminal region of human ICB1.

Dilution

FC~~1:10~50

WB~~1:1000

E~~Use at an assay dependent concentration.

Format

Purified polyclonal antibody supplied in PBS with 0.09% (W/V) sodium azide. This antibody is purified through a protein A column, followed by peptide affinity purification.

Storage

Maintain refrigerated at 2-8°C for up to 2 weeks. For long term storage store at -20°C in small aliquots to prevent freeze-thaw cycles.

Precautions

ICB1 Antibody (C-term) is for research use only and not for use in diagnostic or therapeutic procedures.

ICB1 Antibody (C-term) - Protein Information**Name** THEMIS2 ([HGNC:16839](#))**Function** May constitute a control point in macrophage inflammatory response, promoting

LPS-induced TLR4-mediated TNF production (PubMed:[20644716](#)). Determines the threshold for activation of B cells by low-affinity and low-avidity ligands via PLCG2 activation and its downstream pathways (By similarity).

Cellular Location

Nucleus {ECO:0000250|UniProtKB:Q91YX0}. Cytoplasm {ECO:0000250|UniProtKB:Q91YX0}

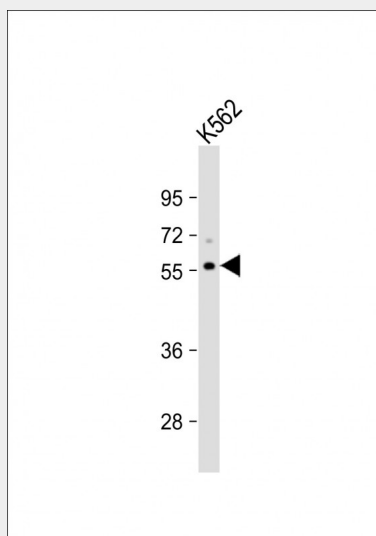
Tissue Location

Expressed in different endometrial adenocarcinoma cell lines and various other cell lines apart from the prostate cell line LNCaP and the ovarian cancer cell line BG1

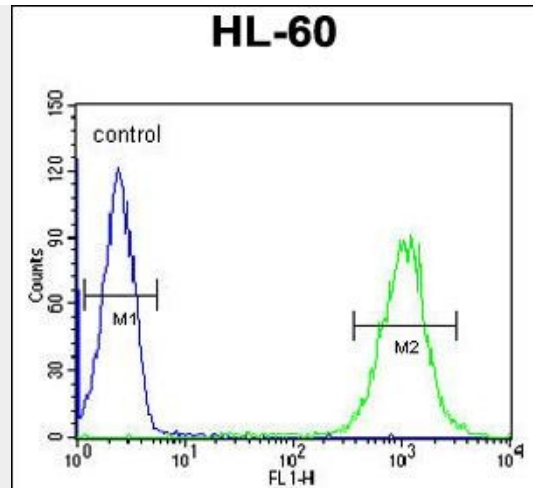
ICB1 Antibody (C-term) - Protocols

Provided below are standard protocols that you may find useful for product applications.

- [Western Blot](#)
- [Blocking Peptides](#)
- [Dot Blot](#)
- [Immunohistochemistry](#)
- [Immunofluorescence](#)
- [Immunoprecipitation](#)
- [Flow Cytometry](#)
- [Cell Culture](#)

ICB1 Antibody (C-term) - Images

Anti-ICB1 Antibody (C-term) at 1:1000 dilution + K562 whole cell lysate Lysates/proteins at 20 µg per lane. Secondary Goat Anti-Rabbit IgG, (H+L), Peroxidase conjugated at 1/10000 dilution. Predicted band size : 72 kDa Blocking/Dilution buffer: 5% NFDM/TBST.



ICB1 Antibody (C-term) (Cat. #AP9910b) flow cytometric analysis of HL-60 cells (right histogram) compared to a negative control cell (left histogram). FITC-conjugated goat-anti-rabbit secondary antibodies were used for the analysis.

ICB1 Antibody (C-term) - Background

Involved in cell adhesion. There are 4 isoforms produced by alternative splicing.

ICB1 Antibody (C-term) - References

Springwald, A., et al. Cancer Invest. 27(6):669-672(2009)
Treeck, O., et al. Cytokine 32 (3-4), 137-142 (2005)
Treeck, O., et al. Leuk. Res. 26(8):765-769(2002)

ICB1 Antibody (C-term) - Citations

- [Themis2 is not required for B cell development, activation, and antibody responses.](#)
- [Themis2/ICB1 is a signaling scaffold that selectively regulates macrophage Toll-like receptor signaling and cytokine production.](#)